

# WORCESTERSHIRE COUNTY BRANCH OF THE BHS



NEWSLETTER

October 2011

## Introduction

Apologies for the short Newsletter this Autumn .

It is with great regret that I will be stepping down as Chair person in the next year.

The Terms of Reference and Byelaws of the BHS dictate that a Chairperson can serve a three year term and be re elected every year for the next 3 years but must stand down after six years in post.

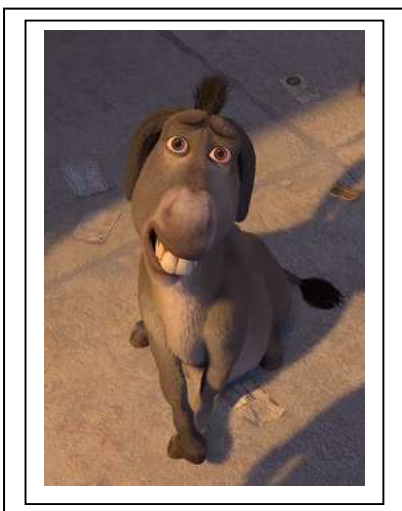
We are therefore looking to elect a Vice Chair person who can step into my shoes and "take up the reins "in the coming months .

Andrea, our Development Officer has summarised the Chairman's job description inside. Please take time to have a look and consider whether you would like to be considered for the role.

I hope that my successor enjoys the challenge as much as I have,

Regards

Bev



**"Why the long face?"  
Adios**



## Worcestershire Committee Contacts

### COUNTY DEVELOPMENT OFFICER

- Andrea Jackman 01686 627050/  
07881 661429. [a.jackman@bhs.org.uk](mailto:a.jackman@bhs.org.uk)

### CHAIRMAN

- Bev Hudson 01384 568088/07881 786179  
[bev.hudson2@btinternet.com](mailto:bev.hudson2@btinternet.com)

### TREASURER -

- Lu Brightwell 07894 345062

### SECRETARY -

- Bobbie Matulja

### MEMBERSHIP -

- Jennie Eakins

### ACCESS

- Bobbie Matulja 07932 741558

### R & RS

- Fiona Jeffries 01886 888292

### WELFARE

Lisa Randle (regional welfare officer)

[Lisa\\_Randle@hotmail.co.uk](mailto:Lisa_Randle@hotmail.co.uk) /07767

897902

- Julian Hunt 01386 556022/07970 016834
- Jennie Eakins 01527 597354/07976  
571464

### NEWSLETTER/MARKETING

- Bev Hudson 01384 568088/07881 786179

### COMMITTEE MEMBERS

- Rebecca Wassell 01905 391903/07903 522268

## Events Remaining 2011

### Urgent

**see inside for further details**

**Wednesday 12 October 2011**

**@7.30pm**

**Worcestershire County Branch  
of the BHS**

**Annual Meeting**

**Please attend**

## County Chairman

What does the role entail?

The County Chairman is the person who leads the Committee in it's activities throughout the year with their own enthusiasm for the BHS and our Charitable work. The Chairman needs to be effective at running meetings and be the point of contact for any queries from colleagues in between meetings, liaising with the Development Officer and staff at HQ where necessary. It's a varied role and very fulfilling, especially when you see members and non-members enjoying the events your Committee runs and you see membership rising in your County as a result.

*Andrea Jackman*

West Midlands Development Officer

If you would like to know more, or be considered for the position please contact Andrea Jackman or Beverly Hudson.  
(contact details are on the front page )

[www.bhswm.org.uk](http://www.bhswm.org.uk)

**Don't forget to look at the West Midlands website for more news and events from around the West Midlands region.**

### Mounted Games Winter Training

**Lou Thomas and Kay Robbins are available for training sessions during the Winter months prior to the competitions which will be organised at both County and Regional level next Spring.**

**If you want to be on top form contact Bev Hudson or Lu Brightwell  
(Contact details on the front page)**



# LOOK!

ONLINE SHOP NOW LIVE  
[www.thetacklocker.co.uk](http://www.thetacklocker.co.uk)

**10% off First Order**  
Use Code LJR99

[www.thetacklocker.co.uk](http://www.thetacklocker.co.uk)  
Tel: Jane on **07793 982 604**

**The Tack Locker** 



- Quality products at affordable prices delivered to your door
- Family run business, that has over 35 years experience in competitive equestrian disciplines, products and equine ownership
- We aim to provide quality tried and tested products at reasonable prices to our customers, old and new
- Heritage and Best Quality Walsall made English Leatherwork
- Rhinegold Products
- Fly Away / Groom Away Products
- Top horse care brands
- Top branded supplements
- Neue Schule bits

# IN THE SADDLE HOLIDAYS ON HORSEBACK

working ranches . horseback safaris . riding expeditions . instruction holidays



Call for our brochure or come and visit us  
Reaside Farm, Neen Savage  
Cleobury Mortimer, Shropshire DY14 8ES  
Tel: 01299 272 997 [www.inthesaddle.com](http://www.inthesaddle.com)

## **BHS QUALIFIED INSTRUCTOR**

**HANNAH JACKSON**  
**(BHSII) (UKCC COACH)**

AVAILABLE FOR PRIVATE OR GROUP LESSONS.

SPECIALISED TUITION IN SHOW JUMPING BY  
INSTRUCTOR WITH OVER 20 YEARS EXPERIENCE AT  
BSJA LEVEL, INCLUDING REPRESENTING GREAT  
BRITAIN AT INTERNATIONAL COMPETITION.

WHETHER IT'S BREAKING AND SCHOOLING  
YOUNGSTERS ON THE FLAT, TO IMPROVING YOUR  
SHOWJUMPING PERFORMANCE FOR EVENTING,  
UNAFFILIATED OR BSJA LEVEL.

AVAILABLE FOR INSTRUCTION FOR BRITISH HORSE  
SOCIETY, BRITISH RIDING CLUB, PONY CLUB OR SHOW  
JUMPING CLINICS AT ANY VENUE IN THE WEST  
MIDLANDS/WORCESTERSHIRE AREA.

**HANNAH IS NOW TAKING HORSES IN FOR  
SCHOOLING AND/OR COMPETING AND HAS LIVERY  
SPACES AVAILABLE**

**PLEASE CONTACT HANNAH  
ON 07976 253075**

## FREELANCE INSTRUCTOR

Lisa Randle BHSAI

BHS registered and insured

Accredited JumpCross Trainer

Equine Higher National Diploma

Individual and group lessons in flat work, show  
jumping or cross country at reasonable rates.

Riding Clubs and yard visits welcomed.

Helping the everyday rider to achieve their goals  
-nervous and novice a speciality!

Please call to discuss your requirements

07767 897902

[Lisa\\_Randle@hotmail.co.uk](mailto:Lisa_Randle@hotmail.co.uk)



Would you like your horse to work  
to their full potential?

Would you like to ride at your very best?

Would you like help to make progress as  
a stress free, relaxed combination?

Would you like help to  
solve your horse's problems?

Then one of the following techniques could be your  
answer!!

**Equestrian Balancing Therapy**  
**Equine Cranio Sacral Therapy**  
**Riding Tuition Clinics**

For details of any of the above please visit  
[www.equinetherapyservices.co.uk](http://www.equinetherapyservices.co.uk)

or contact:

Julie Houghton BHSI (Reg'd)  
**Cert.ZB, ECST.**

Web site: [www.equinetherapyservices.co.uk](http://www.equinetherapyservices.co.uk)

Email: [Julie@equinetherapyservices.co.uk](mailto:Julie@equinetherapyservices.co.uk)

Mobile: 07954 373006

# Animal Sports Therapy

EQUINE & CANINE

For Rehabilitation & Performance  
Muscular & Skeletal

McTimoney Manipulation blended with Sports  
Massage, Masterson & Myofascial Release  
Techniques

**HARRIET SOPER**

MSc (An. Manip.), MMAA, EBW Equine Sports Massage

07968 448468

[www.harrietsoper.co.uk](http://www.harrietsoper.co.uk) ~ [harrietsoper@gmail.com](mailto:harrietsoper@gmail.com)

Qualified, Registered & Insured Practitioner. Worcestershire Based.

★ ★ ★ ★ ★ ★ ★ ★ ★ ★

**PLEASE MENTION WORCS BHS WHEN  
REPLYING TO ADVERTS**

Support the local companies that support us

★ ★ ★ ★ ★ ★ ★ ★ ★ ★



*Be part of the network to help  
prevent horse related crime*

If you would like your email address added to  
the distribution list of all Horse Watch emails,

both local and national:

Please email Lisa Randle

[lisa@randle-tat.fsnet.co.uk](mailto:lisa@randle-tat.fsnet.co.uk)

or call 07767 897902



The Committee would like to take this opportunity to say

**“Get Well Soon”**

to Sue Brennan who is one of our regular instructors.

We wish Sue all the very best as she recovers from a riding related  
accident and are pleased that she is making steady progress.



**New House Farm  
EQUESTRIAN CENTRE**

-For friendly and efficient  
service contact Jo at  
The Tack Room,  
New House Farm Equestrian Centre  
Belbroughton Road, Blakedown,  
Worcs DY10 3JH

**For all your Horse  
and Rider Needs**

BETA Approved Retailer



Telephone: 01562 701166 • Mob: 07773 648235 • Email: [jo.hansell@tiscali.co.uk](mailto:jo.hansell@tiscali.co.uk)

**The New House Farm Shop is an approved supplier for Simple System Feed**

## 2011 Events Attendance Down

Other than the EquiPilates which was fully subscribed there has been a reduction in the number of people attending events we have organised as a County. Most sessions have still gone ahead despite the small numbers as we do not want to let the people down who have enrolled for events. They are open to BHS members and non members and are aimed to boost confidence and for like minded people to get together and enjoy themselves whilst hopefully improving at the same time.

Those who did attend thoroughly enjoyed themselves.

At a West Midlands regional level ,the series of Gillian Higgins lectures were well attended ,whilst the Adult Gymkhana has been changed to a training session due to insufficient numbers .



## Useful Contacts

### West Midlands website :

[www.bhswm.org.uk](http://www.bhswm.org.uk)

### Worcestershire Facebook site:

<http://www.facebook.com/group.php?gid=308181984213>.

### Shropshire and Herefordshire County Branches of The BHS :

[www.bhswm.org.uk](http://www.bhswm.org.uk)

### Staffordshire County Branch of the BHS

Please look on facebook or contact:

David Wheatley-07900 162984/ [DWheatley@imgroup.co.uk](mailto:DWheatley@imgroup.co.uk)

Jenny Hodson: [onnherhoss@aol.com](mailto:onnherhoss@aol.com),or [www.bhswm.org.uk](http://www.bhswm.org.uk)

### Warwickshire County Branch of The BHS

Phil Nichols at [phil@bhswarwickshire.org.uk](mailto:phil@bhswarwickshire.org.uk)

Full details see [www.bhswm.org.uk](http://www.bhswm.org.uk)

### Mercia BHS TREC Club

For further information and details of forthcoming events visit [www.chd-solutions.co.uk/trec](http://www.chd-solutions.co.uk/trec)

### Worcs Bridleways & Riders Association

**Equine Table Top regularly held-Ombersley**

**Village Hall.**please see website [www.wbra.co.uk](http://www.wbra.co.uk) for details of events

**The Tack Shop**  
EVERYTHING FOR HORSE & RIDER  
INCLUDING FEED & BEDDING

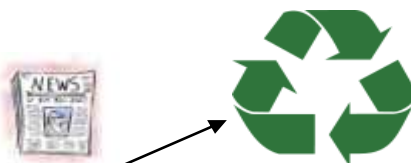
Tel: 01384 294151 Fax: 01384 401059

16a Oak Lane Kingswinford West Midlands, DY6 7JS  
e-mail: enquiries@the-tack-shop.com  
web: www.the-tack-shop.com

## Opening Times

Monday	10 - 5.00
Tuesday	Closed
Wednesday	10 - 5.00
Thursday	10 - 5.00
Friday	10 - 5.00
Saturday	10 - 5.00
Sunday	10 - 1.00

Closed Bank Holiday Mondays



Please note that this newsletter is not routinely posted out to our 1353 members, so unless you have specifically requested to receive Worcestershire BHS newsletters by either email or post, you will only be available to access it online. Contact Bev or Lisa if you require an email or paper copy.

**15+ Horse & Pony Events**  
Exclusively for all horses and ponies  
aged 15 years & over  
[www.15plus.org.uk](http://www.15plus.org.uk)

**Horses are living longer and competing well into their teens and beyond.**

**15+ offers an ideal opportunity to the older horse and riders of any age.**

**15+ Horse & Pony Events welcomes your call, should you wish to know more:**

**Call Linda : 01588 650180**

**Email : [horse15plus@aol.com](mailto:horse15plus@aol.com)**

**or visit the website: [www.15plus.org.uk](http://www.15plus.org.uk)**

**Reminder**

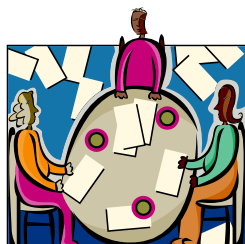
**Worcestershire County Branch of the BHS  
Annual Meeting**

**Wednesday 12 October 2011 at 7.30pm**

**The Bell,**

**Bromsgrove Road, Belbroughton,**

**Nr. Stourbridge DY9 9XU.**



**Short Business meeting followed by:**

**Equine Welfare – The Burning Issues**

**Presentation By Lee Hackett BHS Welfare**

**There will be a raffle with many fantastic prizes donated by our advertisers:**

**Including : £200 In The Saddle Holiday Voucher**

**Free Tuition from our Instructors /Free treatments**

**Many quality equine associated items**

**Please attend as we need your support and input and are always looking for new  
committee members.**

**If you are interested please contact Bev Hudson on 07881 786179 or  
bev.hudson2@btinternet.com**

 **A Dignified Service With Care & Attention**

**INDIVIDUAL  
PET & EQUINE  
CREMATION**

**Owl Hill,  
Dunhampton,  
Stourport-On-  
Severn,  
Worcestershire,  
DY13 9SS.**

**Tel: 01905 620700**



**Individual Equine Cremation**

**Current Prices:**

Pick up is free within a 20 mile radius of the facility and £1 per mile thereafter

**Cremation service:**

Under 16hh -£480

Over 16hh--£540

Solid Cob --£600

For anyone who wants to be reassured that we provide genuine individual cremations or wants to know more about our pet crematorium please visit the website:

[www.individualpetcremation.co.uk](http://www.individualpetcremation.co.uk)

email:enquiries@individualpetcremation.co.uk. Alternatively ,contact Mandy for a visit on 01905 620700