



The British Horse Society
Registered Charity No. 210504
and SC038516

BHS Warwickshire County Committee Newsletter

March 2010

Issue 4

Upcoming Events

27th March 2010

BHS TREC Indoor competition
(re-scheduled from February)

Classes:

- Affiliated & Unaffiliated Open
- Unaffiliated Pairs
- Affiliated & Unaffiliated Newcomers

11th April 2010

BHS TREC Team indoor competition

Classes:

- Affiliated British Riding Clubs (any area)
- Schools
- BHS Approved Riding Centres

Venue: Onley Grounds EC, Rugby

19th October 2010

BHS Warwickshire Annual Meeting

More details on the back page.



Chairman's Message

Thanks to those of you who joined us for the Annual Meeting in October; it was a great evening with a talk from Mary Weston who took part in the BHS Challenge ride in Mongolia and an Indian curry buffet – Yummy! Feedback was very positive and we will probably do the same again this year so do come along and join us.

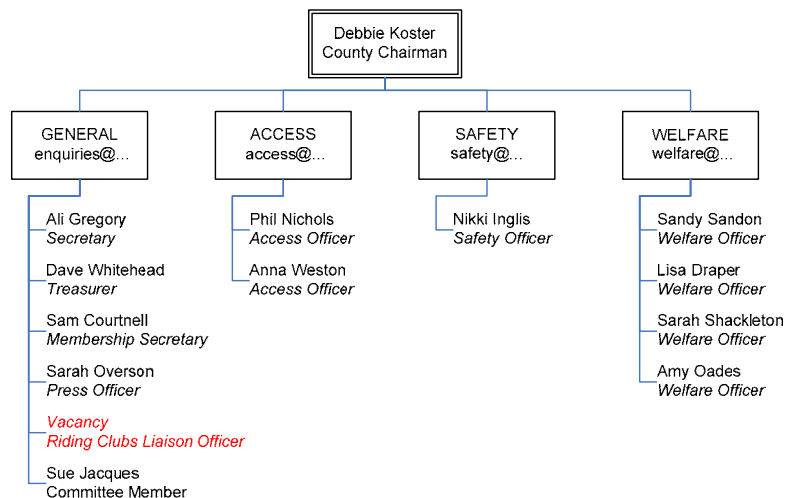
If you, like me, have felt that getting on with the New Year was suspended whilst we were all snowed in, now is a good time to set those new goals for the year! We are planning some more BHS TREC indoor competitions and would love to see more of you join us for

what has proved to be a very successful venture for us over the last twelve months. We have turned the winter corner now and can look forward to better riding days; we wish you many happy riding hours!

Debbie Koster

Chairman

Ps. We are still inviting enquiries from BHS Gold members who would like to find out more about becoming Chairman this year – do call for a no obligation chat if you would like to know more!



The ebbs and flows of committee lifecycles

The ebbs and flows of committee lifecycles mean that each year we inevitably lose some members; this is always sad but the pay-off is that we get new people too. This year we were very sorry to lose Ian and Gillian from the Access Team; they married and had their first baby last year and we offer them our thanks and hearty Congratulations!

Fran Penn also resigned as Safety Rep due to other commitments. Fran will be very sorely missed; she worked in this role for many years and has made a huge contribution to Riding and Road Safety in

the County for which, we say a huge, Thank You! We are fortunate that Fran continues to support the cause in another role.

We lost the support of two other special ladies in rather sadder circumstances last year; many of you will know that Heather Lucas (West Midlands Regional Chairman) died suddenly and unexpectedly. Margery Woodward, known to all as Nan, also died after a period of illness. Whilst neither lady was a member of the Warwickshire Committee, both gave vast support to the BHS, riders and equine welfare over many, many years. The sums raised in lieu of

funeral flowers for both of them will continue to make a difference. They touched the lives of many and will be very sadly missed.

We welcome to the Committee, Sam Courtnell who takes over from Anna as Membership Secretary and Sue Jacques who has an interest in alternative equine therapies.

My thanks also go to Nikki Inglis who takes up the role of Safety Rep, and Anna Weston who has become an Access Officer.



The British Horse Society
Registered Charity No. 210504
and SC038516

Riding and Road Safety

By Nikki Inglis - Safety Rep

The first thing to report is after many years of dedicated work FRAN PENN has decided to step back as County Rep, but will remain working as an examiner. **We owe her a huge thank you for all the work she has done to develop and promote Road Safety in Warwickshire over the last 20 years.** I hope that I can continue this work with the same enthusiasm as Fran has always shown.

Following this news – **we are actively looking for new venues.**

Venue requirements:

- Bare minimum fenced area for simulated test 20m x 40m; can be an arena but a level field is ideal
- Room for the theory test

with seating and writing facilities.

- Road route needs to include a minimum of two right turns and two left turns and a period of trot.
- A reasonable amount of traffic, although heavy traffic is not desirable.

The route and facilities need to be risk assessed by two examiners and the charge for this is £35.

Training is best undertaken by a registered trainer or examiner to ensure this is up to date. A minimum of eight hours training is recommended, this would be split between theory and practical sessions. This is ideal during the dark winter evenings planning ahead to better weather for the test date.

The test date needs to be

booked through your county rep and needs a minimum of eight candidates.

Everything you need to know about the test and the syllabus are available to download from the BHS website; follow the links to Safety and the Riding and Road Safety Test.

Looking forward to meeting you and working with you to make Warwickshire the best county for Road Safety. The more people we can encourage and educate through the test, the more the driving public will see and understand the horse's place on the road. Consistency pays off – the more riders who have passed their test, the more everyone will ride the same and use the same signals therefore the driving public will start to appreciate and improve their expectations.



Recent Events

By Anna Weston

October 2009 BHS Warwickshire Annual Meeting

Following the usual quick formalities (we still hold the record for the quickest County Annual meeting in the region!) we enjoyed a delicious curry buffet and an illustrated talk from Mary Weston who went on the BHS Challenge ride to Mongolia during the summer. Mary's talk was very interesting and the riding certainly looked very different to your typical hack in Warwickshire!



November 2009 BHS TREC Indoor Competition

This event formed part of the Kelly Marks Winter Series Indoor League. A very full day of competition saw over 50 rounds of the course between 10am and 6pm, finishing just as the first few Bonfire Night celebrations kicked off!

Congratulations go to the class winners:
Sue Lee riding Daisy - Affiliated Open
Julian Brown riding Barney - Unaffiliated Open
Georgina Brooke-Holmes riding Fred - Affiliated Newcomers
Emily Marlow riding Grace - Unaffiliated Newcomers



February 2010 BHS TREC Judges Training

At each TREC competition that we've run to date we've struggled to find sufficient judges so to encourage new volunteers for future events we ran a FREE judges training session. Two riders acted as guinea pigs demonstrating a variety of TREC obstacles.

Cake and soup kept the cold out whilst everyone worked hard to get their heads around the scoring system - not easy!

Access Issue in Compton Scorpion - we need *your* help!

By Anna Weston - Access Officer

Warwickshire County Council are being pressured to open a route through Compton Scorpion to motorised traffic. This may have an adverse effect on the existing high number of non-motorised users such as walkers, riders and cyclists.

The Council have agreed to consider a Traffic Regulation Order (TRO) which would prohibit vehicular traffic but retain bridleway use of the route. Support is needed from users and other concerned individuals during this process to show that this is the right course of action.

vehicles the Council will need to erect a bridge over a stream; the estimated cost for this is £40,000 which is over 20% of their entire annual budget for looking after the County's rights of way network.

If you would like to object to this route being open to traffic, **please write or email Martin Fry or Lisa Arben at Shire Hall, Warwick, CV34 4SA or [martinfry@warwickshire.gov.uk](mailto:martin.fry@warwickshire.gov.uk) or lisaarban@warwickshire.gov.uk with your objections and reasons.**

The point of contact at Compton Scorpion Estate is Caroline Warren on cse@boltblue.com and she can provide more information.



By Rachel Molloy - BHS Welfare

Sweet itch is an allergic reaction to the saliva of biting midges (*Culicoides* midge) and a type of black fly. It is a problem that can affect horses, ponies and donkeys irrelevant of breed or size.

Sweet Itch is normally a seasonal complaint as midges are most active between the months of April and November. Midges tend to bite mostly in the early morning and late afternoon.

The clinical signs of sweet itch may include:

- Severe pruritus (intense itching)
- Hair loss
- Thickening of the affected skin
- Flaky dandruff
- Weeping sores
- Sores/pruritus are commonly found along the neck, mane, forelock and tail. In severe cases this may also be seen in other places on the body.
- The horse may repetitively attempt to scratch itself on anything in reach to relieve the intense irritation.
- General lethargy and irritability



Managing sweet itch

The primary objective to avoid sweet itch is to minimise the risk of midge attack. One of the most effective ways to do this is to use a rug designed to help prevent midges from being able to bite. There are numerous sweet itch rugs available. Insect repellents can also offer some protection and topical lotions can help to soothe irritation.

Ensure grazing is well draining; marshy boggy fields and muckheaps may attract

midges and provide a site for breeding. Stabling affected horses at dusk and dawn, when midge feeding is at its peak, may help.

It is advisable to initially consult your vet as soon as possible to plan the most effective method of control.



Laminitis – Now is the time to act

As spring fast approaches the grass in horse paddocks will soon begin to shoot up, full of goodness and nutrients. For some elderly and poorer conditioned horses this grass can't arrive soon enough to help put back on any weight lost over winter. However, for horses that are 'good-doers', ponies and Native breeds in particular, spring grass can cause a whole lot of trouble and now is the time to take action to help prevent laminitis. It is important to remember that laminitis is a serious and very painful condition that can affect any type of horse, pony or donkey **any** time of the year.

Prevention

There are a number of actions that horse owners can take now to help prevent laminitis occurring:

- Watch his weight – keep a weekly record of your horse's weight and aim to keep him at the 'ideal' weight. Obesity is one of the main causes of laminitis. If your horse or pony is overweight do not starve them as this may lead to a serious condition called hyperlipidaemia.
- Learn how to condition score.
- If wearing a rug, can your horse have a lighter rug on or on dry days will he cope without needing to wear a rug?
- Does your horse really need concentrated feed, or could this be cut

down especially with the arrival of spring grass? Make sure his diet is high in fibre and low in sugar and starch.

- If you haven't had much time to ride over the winter months, with daylight hours increasing, now is the time to plan your fittening programme.
- If your horse has been on restricted turnout over the winter months, ensure that turnout to pasture is gradual and the time spent grazing increases gradually over time.
- Horses and ponies that are prone to laminitis or are overweight will need to have their grazing restricted. Now is the time to organise your electric fencing and check that the batteries are fully charged! Don't restrict your grazing too late, monitor your pasture and set up your electric fencing before too much grass comes through.
- There are a number of grazing muzzles now available on the market. Although they greatly help a number of ponies, it is important to ensure that their use is gradually introduced. Monitor your horse closely the first few days to ensure they are settled. **Grazing muzzles should not be left on 24 hours a day**, it is vital that the pony has at least a few hours everyday without wearing the muzzle, i.e. brought into a stable.
- Do you have any sheep available to help graze down the spring grass?

If your horse or pony is showing signs of laminitis remove them from the field immediately into a deeply bedded stable and contact your veterinary surgeon immediately.

For further advice on Sweet Itch, Laminitis, Feeding and Condition Scoring please contact the Welfare department (01926) 707791 or welfare@bhs.org.uk or visit www.bhs.org.uk where our advisory leaflets are available to download.

Access Update

By Phil Nichols - Access Officer

I recently met with Warwickshire County Council access team to establish personal contact and identify a preferred method for reporting riders' concerns regarding access.

The council requested locations of problems be precisely identified with by an Ordnance Survey grid reference rather than a description such as "...the path from Fred's Farm to the main road is blocked...".

However, if you do not know the grid reference of an issue then don't let that deter you reporting it; the BHS Warwickshire Access team can fill in this information for you.

Other facts that emerged:

The council has no responsibility to provide long handles or anything to facilitate opening a gate from horseback;

The council is limited on all fronts; financial, resources and time, so patience when dealing with problems is appreciated;

Whilst a budget has not been assigned to establishing a circular route within Warwickshire it is an aspiration in their long term planning document so watch this space!

On our part to enable tracking of reports the BHS Warwickshire Access team has invested in mapping software covering all of Warwickshire. It is intended to record all

reports on this software as well as on a database of all complaints to track progress.

Hopefully these steps will make communication, particularly regarding ongoing issues, much more efficient.

If you have an issue that you'd like to report, no matter how trivial it may seem, please do get in contact by emailing access@bhswarwickshire.org.uk and one of our Access Officers will investigate. We do not require a grid references at this stage, if the matter is to be reported to the County Council then we can generate the grid reference for you.



The British Horse Society
Registered Charity No. 210504
and SC038516

Upcoming Events

Saturday 27th March 2010

BHS TREC Indoor competition - forms part of the Kelly Marks Winter Series

Swallowfield Equestrian Centre, Lapworth

An indoor competition offering unaffiliated classes for Open, Pairs and Newcomers and affiliated classes for Open and Newcomers.

Sunday 11th April 2010

BHS TREC Team Indoor competition

Onley Grounds Equestrian Centre, nr Rugby, Warwickshire

A team indoor competition offering classes for teams of three or four from Affiliated Riding Clubs and Schools and teams of two from BHS Approved Riding Centres

Tuesday 19th October 2010

BHS Warwickshire Annual Meeting

Venue and more details TBC



For further details and updates on all county events see the website (www.bhswm.org.uk); join the email contact list (email enquiries@bhswarwickshire.org.uk); ring Debbie on 02476 462102 or 07977 101270; or speak to your local committee representative. For more information on BHS TREC visit www.bhs.org.uk.

Could you help with future events?

An events committee has been formed to operate under the County Committee. This committee has organised one outdoor and one indoor TREC competition and a TREC judges training session to date with another two indoor TREC competitions planned for the spring.

We are looking for new people to become a part of the committee. You can commit as much or as little time as you can afford. Being involved in the organisation of a competition doesn't prevent you from entering either as we can ensure you won't gain a competitive advantage!

We hope to run another outdoor TREC competition late in the summer but, due to international commitments of existing committee members, we will need more help if we are to do this. So if you would like to see more TREC events in the area then please do get involved.

If you think you could help out then please do get in contact by emailing events@trecwarwickshire.org.uk

Communicating with the committee

The Warwickshire county committee can be contacted as follows:

enquiries@bhswarwickshire.org.uk goes to Debbie (Chair), Ali (Secretary), Dave (Treasurer), Sam (Membership) and Sarah (Press Officer).

access@bhswarwickshire.org.uk goes to Phil and Anna

safety@bhswarwickshire.org.uk goes to Nikki

welfare@bhswarwickshire.org.uk goes to Sandy, Lisa, Amy and Sarah

All committee members can be emailed directly at [\(theirname\)@bhswarwickshire.org.uk](mailto:(theirname)@bhswarwickshire.org.uk). Full list on front page.

Updates on events, opportunities for **DISCOUNTED EARLY ADMISSION CHARGES** and key news messages will also be sent via a distribution list; **email the committee on enquiries@bhswarwickshire.org.uk to be included.**



Tea break Sudoku

4		8			7	1		
		7	1	3	9			
					5			
5	7						3	1
1	3					4	8	9
			9					
			8		6	5		
		1	5			7		2

